

Lifting Gear

TOP PRODUCTS FOR YOUR CHOICE



Top Products for Your Choice



CONTENTS

About Company	01
---------------------	----

Hoisting	05
----------------	----

1.1 Chain Block	06
-----------------------	----

1.2 Lever Block	08
-----------------------	----

1.3 Electric Hoist	10
--------------------------	----

1.4 Trolley	13
-------------------	----

1.5 Beam Clamp	17
----------------------	----

1.6 Lifting Clamp	19
-------------------------	----

1.7 Hydraulic Jack	22
--------------------------	----

1.8 Snatch Block	24
------------------------	----

1.9 Wire Rope Pulling Machine	28
-------------------------------------	----

1.10 Winch	29
------------------	----

Handling Equipment	33
--------------------------	----

2.1 Stationary Lift Table	34
---------------------------------	----

2.2 Pallet Truck	36
------------------------	----

2.3 Drum Handling	39
-------------------------	----

2.4 Mover And Skate	41
---------------------------	----

2.5 Pickup Machine	43
--------------------------	----

2.6 Permanent Lifting Magnet	45
------------------------------------	----

ABOUT COMPANY



150+
CUSTOMERS



45+
COUNTRIES

Since 1999, Qingdao D&L Group Ltd. is an exporting company focusing on a full range of lifting gear products. With the company focus of “excellent quality and foremost services,” Qingdao D&L group serves all our clients with patience, expertise, professionalism, and attentiveness. As a customer-oriented company, we here at Qingdao D&L Group Ltd. focuses heavily on technological innovation, quality guarantee, and service satisfaction. To achieve them, we strictly control our production process, always providing superior products and services to our customers. Through continuous evaluation and improvement, we aim to ensure the satisfaction of our customers on the smallest details.

Through competitive warranty, punctual delivery, efficient storage, one-stop-shop service, and all ways of transportation, we thrive to establish a long-term relationship between you and us. We look forward to doing business with you and continuing to grow together in the future.



SINCE 1999

SUPERIOR SERVICES



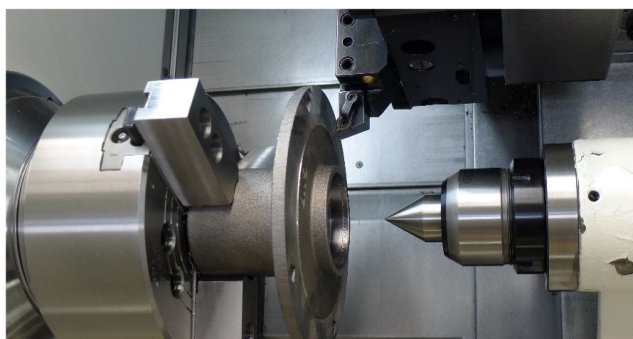
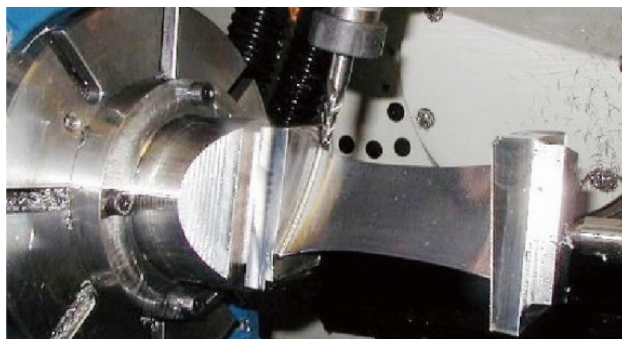
Superior services

Qingdao D&L Group Ltd. provides you with comprehensive quality service. With high products and service quality as our core competitiveness, we constantly commit to sales and management optimization and innovation to improve our services.



High-precision Machining

Advanced CNC machining center promises machining accuracy and greatly improves machining efficiency.

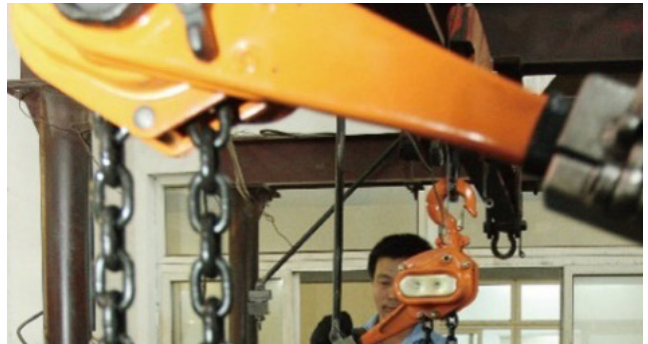


QUALITY CONTROL



Rigorous QC

Finished products are inspected by professional inspection personnel with comprehensive testing to ensure right quality. All production operators are knowledgeable with the key factors that result in high quality.



Warranty



Thank you for purchasing from Qingdao D&L Group Ltd. Our products are TUV and CE approved and could meet your high-quality requirements. Our complete QA system will assure your satisfaction.



PUNCTUAL DELIVERY

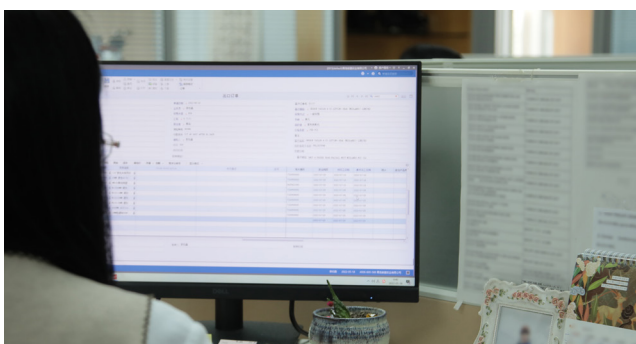


One-stop service

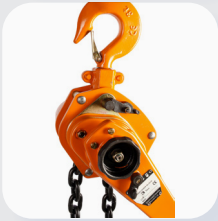
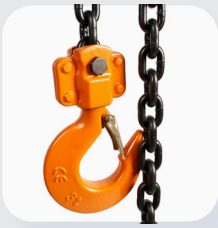
With our modern factory, orderly warehouse, high-tech information management system Kardex Shuttle XP 500, as well as the container loading platform, Qingdao D&L Group Ltd. can easily achieve a full range of storage and logistics services for you.



On-time delivery



With detailed production plan layout, process control supported by efficient and versatile ERP software, as well as monthly delivery assessment for all units, you could rest assure on our punctual delivery time.



HOISTING

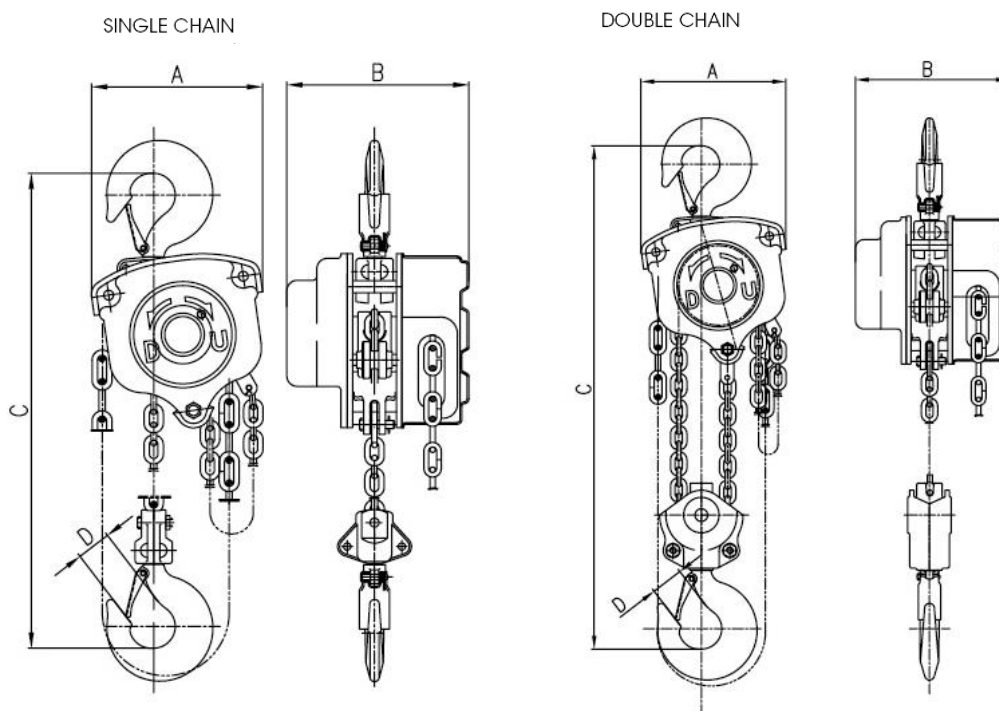
1.1

Chain Block

HSZ-B Chain Block



- ① Capacity from 0.5T to 30T.
- ② Highly shock-resistant housing, fully encapsulated.
- ③ Against moisture and dust.
- ④ Forged hooks with reinforced safety latch.
- ⑤ Automatic double-pawl braking system.
- ⑥ Housing with high quality powder coating.
- ⑦ Extensive spare parts and maintenance service.
- ⑧ Widely used in factories, miners, docks, warehouses, construction sites, agriculture and other fields, to lift goods and lifting equipment, in particular in conditions with no power supply or narrow, demonstrate superiority.



Model	HSZ-0.5B	HSZ-1B	HSZ-1.5B	HSZ-2BS	HSZ-2BD	HSZ-3B	HSZ-5B	HSZ-10B	HSZ-15B	HSZ-20B	HSZ-30B
Rated load(T)	0.5	1	1.5	2	2	3	5	10	15	20	30
Standard lift(m)	2.5	2.5	2.5	2.5	2.5	3	3	3	3	3	3
Test load(T)	0.75	1.5	2.25	3	3	4.5	7.5	12.5	18.75	25	37.5
Effort required at capacity(N)	262	324	395	380	330	402	430	438	447	438	442
Diameter of load chain (mm)	5	6	7.1	8	6	7.1	10	10	10	10	10
No.of load chains	1	1	1	1	2	2	2	4	6	8	10
Dimensions(mm)	A	127	156	180	181	156	180	230	410	410	710
	B	115	131	142	148	131	142	171	171	204	398
	C	288	334	415	435	459	536	660	738	1028	1050
Net weight(kg)	7	10.5	15.5	18.5	16	23	39	69	95	155	237
Extra weight per meter of extra lift(kg)	1.5	1.8	2	2.4	2.7	3.2	5.3	9.8	14.2	19.6	23.9

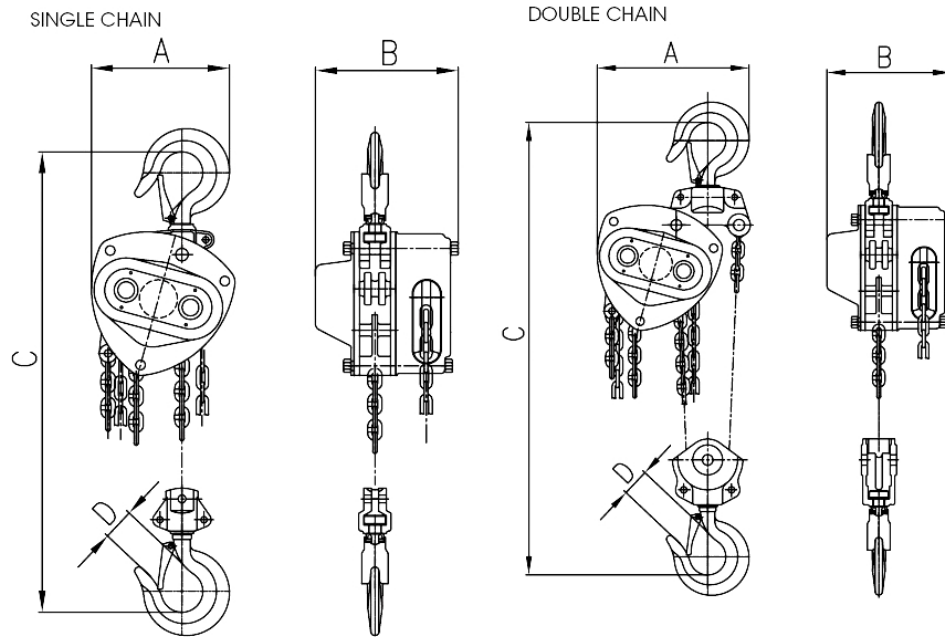
1.1

Chain Block

HSZ-K Chain Block



- ① Capacity from 0.5T to 30T.
- ② Highly shock-resistant housing, fully encapsulated.
- ③ Against moisture and dust.
- ④ Forged hooks with reinforced safety latch.
- ⑤ Automatic double-pawl braking system.
- ⑥ Housing with high quality powder coating.
- ⑦ Extensive spare parts and maintenance service.
- ⑧ Widely used in factories, miners, docks, warehouses, construction sites, agriculture and other fields, to lift goods and lifting equipment, in particular in conditions with no power supply or narrow, demonstrate superiority.



Model	HSZ-0.5K	HSZ-1K	HSZ-1.5K	HSZ-2K	HSZ-3K	HSZ-5K	HSZ-10K	HSZ-20K	HSZ-30K
Rated load(T)	0.5	1	1.5	2	3	5	10	20	30
Standard lift(m)	2.5	2.5	2.5	2.5	3	3	3	3	3
Test load(T)	0.75	1.5	2.25	3	4.5	7.5	12.5	25	37.5
Effort required at capacity(N)	262	324	395	330	402	430	438	438	442
Diameter of load chain (mm)	5	6	7.1	6	7.1	10	10	10	10
No.of load chains	1	1	1	2	2	2	4	8	10
Dimensions(mm)	A	120	147	181	158	202	228	373	703
	B	116	136	147	136	148	178	195	397
	C	285	332	410	470	550	640	1022	1050
	D	28	32	38	40	44	50	64	82
Net weight(kg)	7	10	15	23	23	38	68	160	235
Extra weight per meter of extra lift(kg)	1.5	1.8	2	3.2	3.2	5.3	9.8	19.6	23.9

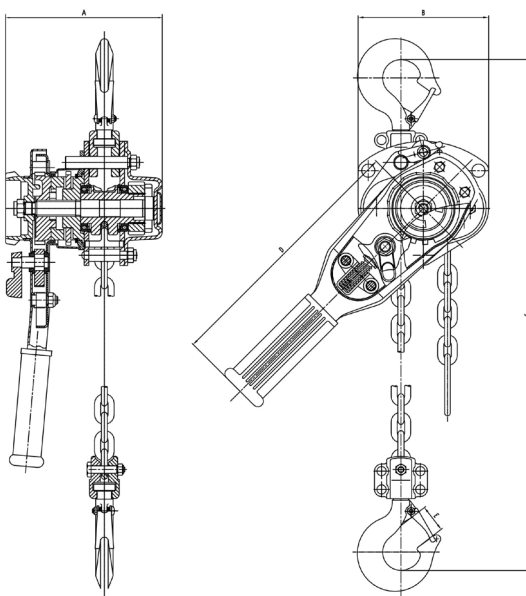
1.2

Lever Block

HSH-V Lever Block



- ① Capacity from 0.25T to 9T.
- ② Chain guides provide smooth chain operation.
- ③ Light weight steel construction with durable powder coat finish.
- ④ Drop forged hooks and hook holders, heat treated to ensure the safety and durability.
- ⑤ Gear assembly provide smooth operation by little hand efforts.
- ⑥ Used in terminals, mining, shipbuilding, construction, transport, telecommunications and other sectors of the equipment installation, lifting objects, pulling parts, parts binding, the line taut and welding and other occasions.



Model		HSH-V2.5	HSH-V5	HSH-V7.5	HSH-V10	HSH-V15	HSH-V20	HSH-V30	HSH-V60	HSH-V90
Rated load(T)		0.25	0.5	0.75	1	1.5	2	3	6	9
Test load(T)		0.375	0.75	1.125	1.5	2.25	3	4.5	9	13.5
Standard lift(m)		1	1.5	1.5	1.5	1.5	1.5	1.5	1.5	1.5
Min.distance between two hooks(mm)		205	260	295	295	335	385	450	615	720
Efforts required at capacity(N)		217	303	140	140	234	251	363	370	375
No.of load chains		1	1	1	1	1	1	1	2	3
Diameter of load chain(mm)		4	5	6	6	7.1	8	10	10	10
Dimensions(mm)	A	92	110	152	152	175	175	195	195	195
	B	75	82	128	128	148	160	181	232	366
	C	205	260	295	295	335	385	450	615	720
	D	153	261	256	256	368	368	368	368	368
	E	17	23	26	26	30	33	34	47	64
Net weight(kg)		1.85	4.6	7.7	8	10.6	14.8	20	28	46

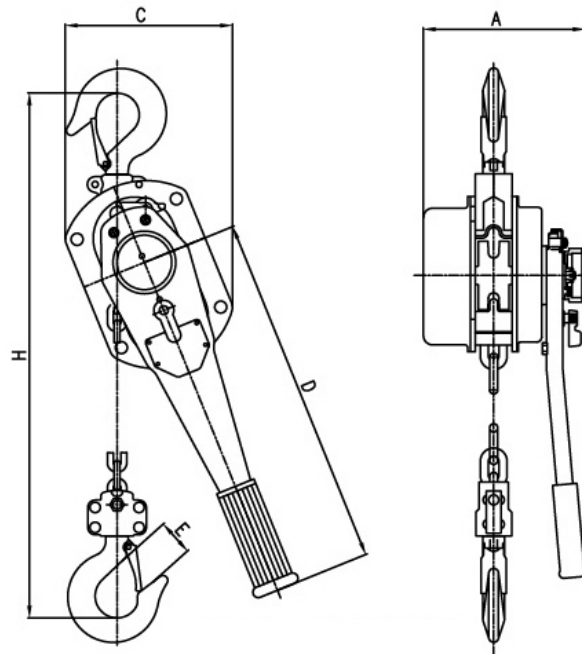
1.2

Lever Block

HSH-C Lever Block



- ① Capacity from 0.25T to 9T.
- ② Chain guides provide smooth chain operation.
- ③ Light weight steel construction with durable powder coat finish.
- ④ Drop forged hooks and hook holders, heat treated to ensure the safety and durability.
- ⑤ Gear assembly provide smooth operation by little hand efforts.
- ⑥ Used in terminals, mining, shipbuilding, construction, transport, telecommunications and other sectors of the equipment installation, lifting objects, pulling parts, parts binding, the line taut and welding and other occasions.



Model		HSH-7.5C	HSH-10C	HSH-15C	HSH-30C	HSH-60C
Rated load(T)		0.75	1	1.5	3	6
Test load(T)		1.125	1.5	2.25	4.5	9
Standard lift (m)		1.5	1.5	1.5	1.5	1.5
Min.distance between two hooks(mm)		295	310	335	405	550
Efforts required at capacity (N)		140	186	234	363	370
No.of load chains		1	1	1	1	2
Diameter of load chain (mm)		6	6	7.1	10	10
Dimensions(mm)	A	148	148	163	191	191
	C	128	128	148	181	244
	H	295	310	335	405	550
	D	256	256	368	368	368
	E	26	26	30	34	47
Net weight(kg)		7.3	7.8	10.4	17.2	26

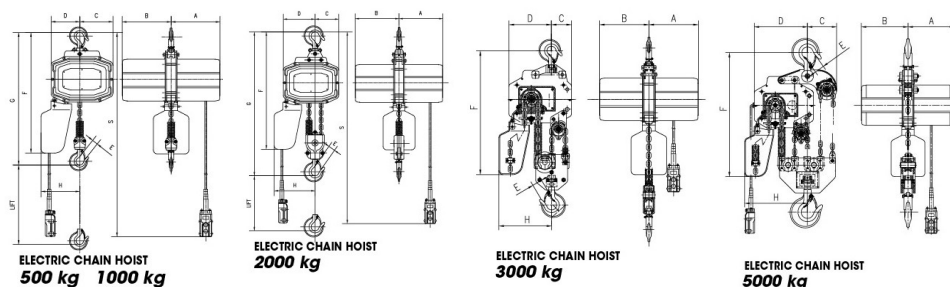
1.3

Electric Hoist

Suspended Type Electric Chain Hoist



- ① Capacity from 500kg to 5000kg.
- ② CE certified.
- ③ Quality chain is supplied by Fec Japan.
- ④ Compact and high efficient motor with heat protection device.
- ⑤ Limit load device are fitted.



HHXG2 SUSPENDED TYPE SINGLE PHASE ELECTRIC CHAIN HOIST

Model	Rated Load	Lift	Lifting Speed	Hoist	Motor 1 Phase	%ED	Load Chain		Dynamical	Min. Headroom	Net Weight
	(Ton)	(m)	(m/min)	Output(kw)	Ins Class		Dia(mm)	Number of falls	Test(KN)	MaxG(mm)	(kg)
HHG205	0.5	3	5.2	0.8	F	40	7.1	1	5.5	545	64
HHG210	1	3	5.2	1.2	F	40	7.1	1	11	580	65
HHG220	2	3	2.6	1.2	F	40	7.1	2	22	740	72
HHG230	3	3	1.7	1.2	F	40	7.1	3	33	790	80

HHXG3 SUSPENDED TYPE THREE PHASE ELECTRIC CHAIN HOIST

Model	Rated Load	Lift	Lifting Speed	Hoist	Motor 3 Phase	%ED	Load Chain		Dynamical	Min. Headroom	Net Weight
	(Ton)	(m)	(m/min)	Output(kw)	Ins Class		Dia(mm)	Number of falls	Test(KN)	MaxG(mm)	(kg)
HHXG305	0.5	3	6.3	0.8	F	40	7.1	1	5.5	545	64
HHG310	1	3	6.3	1.6	F	40	7.1	1	11	580	65
HHXG320	2	3	3.2	1.6	F	40	7.1	2	22	740	72
HHXG330	3	3	2.1	1.6	F	40	7.1	3	33	790	80
HHXG350	5	3	1.3	1.6	F	40	7.1	5	55	950	135

HHXG3 DOUBLE SPEED SUSPENDED TYPE THREE PHASE ELECTRIC CHAIN HOIST

Model	Rated Load	Lift	Lifting Speed	Hoist	Motor 3 Phase	%ED	Load Chain		Dynamical	Min. Headroom	Net Weight
	(Ton)	(m)	(m/min)	Output(kw)	Ins Class		Dia(mm)	Number of falls	Test(KN)	MaxG(mm)	(kg)
HHXG305B	0.5	3	5.2/1.7	0.8/0.25	F	40	7.1	1	5.5	545	64
HHXG310B	1	3	5.2/1.7	1.2/0.4	F	40	7.1	1	11	580	65
HHXG320B	2	3	2.6/0.85	1.2/0.4	F	40	7.1	2	22	740	72
HHXG330B	3	3	1.7/0.58	1.2/0.4	F	40	7.1	3	33	790	80
HHXG350B	5	3	1.0/0.35	1.2/0.4	F	40	7.1	5	55	950	135

1.3

Electric Hoist

SGW Electric Hoist, with Trolley

Shell

- Light aluminum alloy shell shall be adopted, which is light but hard and fit for the use in the terrible work environment with a high heat dissipation rate and all tightness design.

Inverse phase sequence protecting device

- It is the special electrical installation which controls the circuit not to work in case of wiring error in the power supply.

Limit switch

- The limit switch device is installed where the weight is lifted on and off to make the motor to stop automatically so as to prohibit the chains from exceeding for safety.

24V/36V device

- It is used to prohibit the emergencies from occurring in case of the leakage in the switch.

Side magnetic braking device

- This device shall realize the instant brake in case of the power dump.

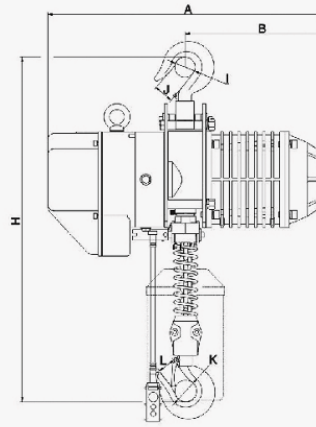
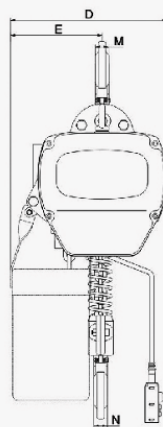
Chain bag

- It shall be light, handsome and durable.

Chain

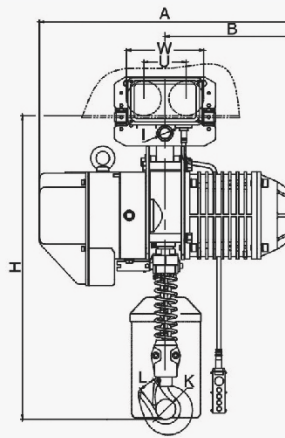
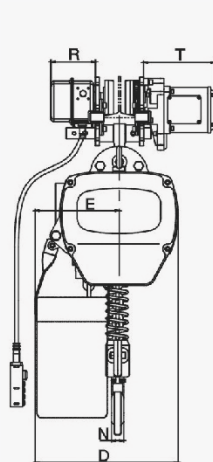
- The chain shall adopt the imported FEC G80 ultra heat-treatable aluminum alloy chain.

SGW ELECTRIC HOIST

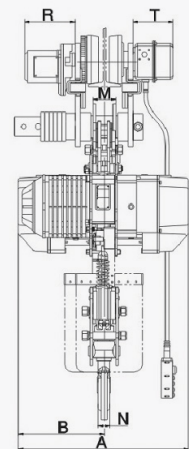
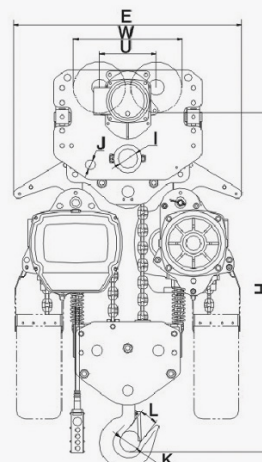


0.5 Ton - 10 Ton Electric Hoist

SGW ELECTRIC HOIST WITH TROLLEY



0.5 Ton - 5 Ton Electric Hoist with Trolley



10 Ton Electric Hoist with Trolley

SGW ELECTRIC HOIST/SINGLE SPEED/0.5TON-10TON/TECHNICAL PARAMETERS

Model	Rated Load (Ton)	Standard Lifting Height(m)	Lifting Speed (m/min)	Power (kw)	Rotation Speed (r/min)	Phases	Voltage (v)	Frequency (Hz)	Chain Falls	Chain Specification	Test Load (t)	Weight (kg)	Weight Added with 1m Higher (kg)
SGW-00501SF	0.5	3	6.8	0.75	1440	3	200-440	50	1	Φ6.3	0.625	47	0.81
SGW-01001SF	1	3	6.6	1.5	1440	3	200-440	50	1	Φ7.1	1.25	61	1.1
SGW-01002SF	1	3	3.4	0.75	1440	3	200-440	50	2	Φ6.3	1.25	52	1.62
SGW-01501SF	1.5	3	8.8	3.0	1440	3	200-440	50	1	Φ10.0	1.875	108	2.3
SGW-02001SF	2	3	6.6	3.0	1440	3	200-440	50	1	Φ10.0	2.5	115	2.3
SGW-02002SF	2	3	3.3	1.5	1440	3	200-440	50	2	Φ7.1	2.5	73	2.2
SGW-02501SF	2.5	3	5.4	3.0	1440	3	200-440	50	1	Φ11.2	3.125	116	2.8
SGW-03001SF	3	3	5.4	3.0	1440	3	200-440	50	1	Φ11.2	3.75	122	2.8
SGW-03002SF	3	3	4.4	3.0	1440	3	200-440	50	2	Φ10.0	3.75	131	4.7
SGW-05002SF	5	3	2.7	3.0	1440	3	200-440	50	2	Φ11.2	6.25	151	5.6
SGW-10004SF	10	3	2.7	3.0	1440	3	200-440	50	4	Φ11.2	12.5	300	8.4
Model	H	A	B	D	E	I	J	K	L	M	N		
SGW-00501SF	550	460	230	280	160	Φ35	25	Φ35	25	17	17		
SGW-01001SF	650	520	260	300	176	Φ40	31	Φ40	31	22	22		
SGW-01002SF	670	460	230	280	205	Φ40	31	Φ40	31	22	22		
SGW-01501SF	800	615	295	430	265	Φ47	40	Φ47	38	30	30		
SGW-02001SF	800	615	295	430	265	Φ47	40	Φ47	38	30	30		
SGW-02002SF	835	520	260	300	236	Φ47	38	Φ47	38	30	30		
SGW-02501SF	845	615	295	430	265	Φ58	47	Φ58	47	36	36		
SGW-03001SF	845	615	295	430	265	Φ58	47	Φ58	47	36	36		
SGW-03002SF	950	615	295	430	320	Φ58	47	Φ58	47	36	36		
SGW-05002SF	1030	615	295	430	325	Φ60	48	Φ60	48	43	43		
SGW-10004SF	1400	630	315	/	890	Φ85	80	Φ80	80	104	55		

SGW ELECTRIC HOIST WITH TROLLEY /SINGLE SPEED/0.5TON-10TON/TECHNICAL PARAMETERS

Model	Rated Load (Ton)	Standard Lifting Height (m)	Lifting Speed (m/min)	Power (kw)	Rotation Speed (r/min)	Phases	Voltage (v)	Frequency (Hz)	Chain Falls	Chain Specification	Test Load (t)	I-Beam (mm)	Weight (kg)	Weight Added with 1m Higher (kg)	
SGW-00501SE	0.5	3	6.8	0.75	1440	3	200-440	50	1	Φ6.3	0.625	58-153	89	0.81	
SGW-01001SE	1	3	6.6	1.5	1440	3	200-440	50	1	Φ7.1	1.25	58-153	103	1.1	
SGW-01002SE	1	3	3.4	0.75	1440	3	200-440	50	2	Φ6.3	1.25	58-153	101	1.62	
SGW-01501SE	1.5	3	8.8	3.0	1440	3	200-440	50	1	Φ10.0	1.875	82-178	157	2.3	
SGW-02001SE	2	3	6.6	3.0	1440	3	200-440	50	1	Φ10.0	2.5	82-178	164	2.3	
SGW-02002SE	2	3	3.3	1.5	1440	3	200-440	50	2	Φ7.1	2.5	82-178	122	2.2	
SGW-02501SF	2.5	3	5.4	3.0	1440	3	200-440	50	1	Φ11.2	3.125	100-178	177	2.8	
SGW-03001SE	3	3	5.4	3.0	1440	3	200-440	50	1	Φ11.2	3.75	100-178	183	2.8	
SGW-03002SE	3	3	4.4	3.0	1440	3	200-440	50	2	Φ10.0	3.75	100-178	192	4.7	
SGW-03003SE	3	3	2.2	1.5	1440	3	200-440	50	3	Φ7.1	3.75	100-178	146	3.5	
SGW-05002SE	5	3	2.7	3.0	1440	3	200-440	50	2	Φ11.2	6.25	100-178	234	5.6	
SGW-10004SE	10	3	2.7	3.0	1440	3	200-440	50	3	Φ11.2	12.5	150-220	440	11	
Model	H	A	B	D	E	I	J	K	L	M	N	W	U	R	T
SGW-00501SE	630	460	230	280	160	Φ35	-	Φ35	25	-	17	206	111	142	231
SGW-01001SE	650	520	260	300	176	Φ40	-	Φ40	32	-	24	206	111	142	231
SGW-01002SE	695	460	230	280	205	Φ41	-	Φ40	31	-	24	206	111	142	231
SGW-01501SE	770	615	295	430	265	Φ47	-	Φ47	40	-	30	237	127	142	231
SGW-02001SE	770	615	295	430	265	Φ47	-	Φ47	40	-	30	237	127	142	231
SGW-02002SE	815	520	260	300	236	Φ36	-	Φ47	38	-	30	237	127	142	231
SGW-02501SF	830	615	295	430	265	Φ58	-	Φ58	48	-	36	265	140	142	231
SGW-03001SE	830	615	295	430	265	Φ58	-	Φ58	48	-	36	265	140	142	231
SGW-03002SE	930	615	295	430	320	Φ43	-	Φ58	47	-	36	265	140	142	231
SGW-03003SE	940	520	260	350	205	Φ43	-	Φ58	47	-	36	265	140	142	231
SGW-05002SE	1015	615	295	430	325	Φ54	-	Φ60	48	-	43	296	156	142	231
SGW-10004SE	1190	630	315	-	890	Φ70	Φ36	Φ85	80	85	55	366	191	142	231

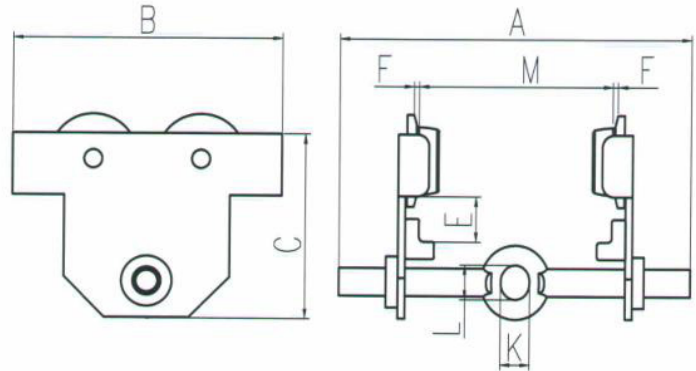
1.4

Trolley

CTP Series Push Trolley



- ① Drop forged screw thread shaft design for easy adjustment and assembling.
- ② Suitable for manual, electric and pneumatic hoists.
- ③ With thick plate, stronger and durable.
- ④ Suitable for kinds of I-beams.
- ⑤ Very simple, virtually infinite adaptation to various beam flange widths.



Model		0.5T	1T	2T	3T	5T
Rated capacity(T)		0.5	1	2	3	5
Test load(Kn)		6.25	12.5	25	37.5	62.5
Running height(m)		/	/	/	/	/
Chain pull to lift full load(N)		/	/	/	/	/
Min radius curve(m)		0.9	1	1.2	1.3	1.4
Dimension(mm)	A Pylon	300	300	310	320	330
	B	200	238	270	320	365
	C	175	186	215	268	306
	E	20	30	30	30	32
	F	≈3	≈3	≈3	≈3	≈3
	K	25	30	40	48	60
	L	30	35	47	58	70
Adjustable beam width	M Pylon	50-220	58-220	66-220	74-220	90-220
Extra weight per meter of extra lift(kg)		/	/	/	/	/
Net weight(kg)	Pylon	5.6	8.9	14.8	23.8	37
Lengthen Pylon		5.9	9.2	15.1	24.3	37.5

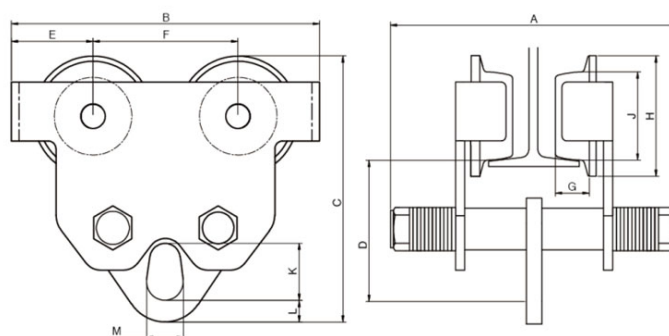
1.4

Trolley

TP Series Push Trolley



- ① Lightweight robust construction.
- ② Super-quick adjustment any monorail.
- ③ Durable baked enamel paint protection.
- ④ Precision ball bearing trolley wheels.

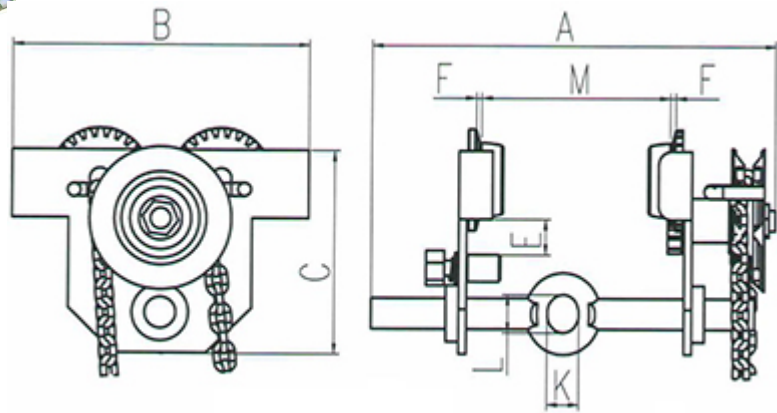


Code	Model		Rated Load(t)			Test Load(t)		I-Beam recommended (mm)			Weight (kg)	
TP005	TP0.5T		0.5			0.75		64-110			5.5	
TP010	TP1T		1			1.5		54-152			9	
TP020	TP2T		2			3.0		76-165			13	
TP030	TP3T		3			4.5		76-203			22	
TP050	TP5T		5			7.5		88-203			36	
TP0100	TP10T		10			15		122-203			83	
Code	A	B	C	D	E	F	G	H	J	K	L	M
TP005	108	200	190	230	53	94	18.5	78	57	37	14	24
TP010	115	238	211	260	59	120	24	90	66	40	16	28
TP020	130	274	236	300	69	136	26	105	75	44	17	34
TP030	104	314	295	320	82	150	33	130	90	60	17	34
TP050	177	364	334	320	97	169	38	150	112	65	22	40
TP0100	237	460	460	370	130	198	55	189	150	90	27	57

CTG Series Geared Trolley



- ① Drop forged screw thread shaft design for easy adjustment and assembling.
- ② Suitable for manual, electric and pneumatic hoists.
- ③ Very simple, virtually infinite adaptation to various beam flange widths.
- ④ Automatic welding.
- ⑤ Adjustable for wide range of beams and different profiles.
- ⑥ With galvanized hand chain.



Model		0.5T	1T	2T	3T	5T
Rated capacity(T)		0.5	1	2	3	5
Test load(Kn)		6.25	12.5	25	37.5	62.5
Running height(m)		3	3	3	3	3
Chain pull to lift full load(N)		45	55	100	75	120
Min radius curve(m)		0.9	1	1.2	1.3	1.4
Dimension(mm)	A Pylon	353	355	362	370	390
	B	200	238	270	320	365
	C	175	186	215	268	306
	E	20	30	30	30	32
	F	≈3	≈3	≈3	≈3	≈3
	K	25	30	40	48	60
	L	30	35	47	58	70
Adjustable beam width	M Pylon	50-220	58-220	66-220	74-220	90-220
Extra weight per meter of extra lift(kg)		≈1	≈1	≈1	≈1	≈1
Net weight(kg)	Pylon	9	12.3	18.2	28	41.2
Lengthen Pylon		9.3	12.6	18.5	28.5	41.7

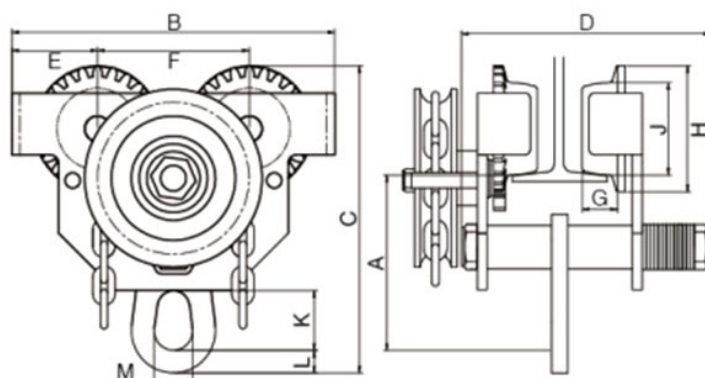
1.4

Trolley

TG Series Geared Trolley



- ① Lightweight robust construction.
- ② Super-quick adjustment to any monorail.
- ③ Durable baked enamel paint protection.
- ④ Precision ball bearing trolley wheels.
- ⑤ Complies with AS/NZ 1418.2.



Code	Model	Rated Load(t)				Test Load(t)		I-Beam recommended (mm)			Weight (kg)	
TG005	TG0.5T	0.5				0.75		64-110			9.5	
TG010	TG1T	1				1.5		54-152			12	
TG020	TG2T	2				3.0		76-165			16.5	
TG030	TG3T	3				4.5		76-203			25	
TG050	TG5T	5				7.5		88-203			38	
TG100	TG10T	10				15		122-203			93	
TG200	TG20T	20				30		122-203			215	
TG300	TG30T	30				45		122-300			230	
TG500	TG50T	50				75		122-300			610	
Code	A	B	C	D	E	F	G	H	J	K	L	M
TG005	108	200	190	230	53	94	18.5	78	57	37	14	24
TG010	115	238	211	260	59	120	24	90	66	40	16	28
TG020	130	274	236	300	69	136	26	105	75	44	17	34
TG030	164	314	295	320	82	150	33	130	96	60	17	34
TG050	177	364	334	320	97	169	38	150	112	65	22	40
TG100	237	460	460	370	130	198	55	189	150	90	27	57
TG200	240	565	495	392	148	268	55	225	175	110	56	80
TG300	258	625	564	512	164	296	60	255	196	125	76	90
TG500	258	1255	564	512	164	296	60	255	196	125	76	90

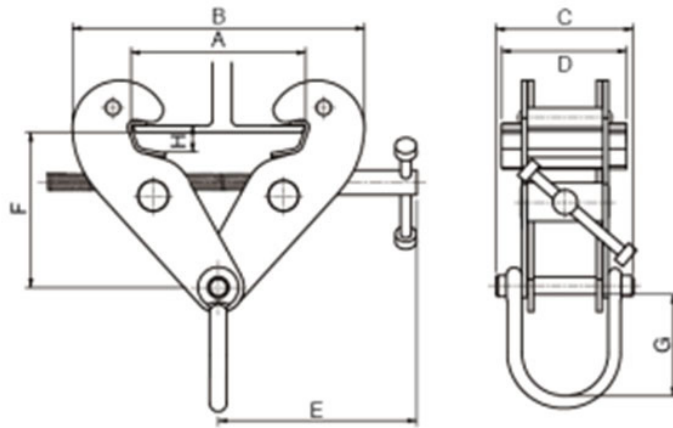
1.5

Beam Clamp

Beam Clamp with Shackle Type WJC



- ① Shackle suspension point.
- ② Suitable for pulling and lifting at angles across the beam.
- ③ Up to 45° side loading and 15° cross loading.
- ④ Highly flexible for lifting, pulling or as a semi-permanent anchor point.
- ⑤ Evenly distributed loads achieved through maximum jaw surface area.



Code	Model	Capacity Load (T)	Test Load (T)	I-Beam Width Range (mm)	A Max.	B		C	D	E	F		G	H	Net Weight (kg)
						Min.	Max.				Min.	Max.			
WJC010	WJC1T	1	1.5	75-220	260	180	330	138	122	220	132	155	88	22	5.5
WJC020	WJC2T	2	3	75-220	260	185	330	156	122	220	132	155	91	22	6.6
WJC030	WJC3T	3	4.5	80-320	390	265	466	195	150	262	178	228	108	35	12.5
WJC050	WJC5T	5	7.5	80-320	390	265	466	237	150	262	178	228	108	35	17.5
WJC100	WJC10T	10	15	80-350	390	285	520	310	200	300	186	236	176	35	23

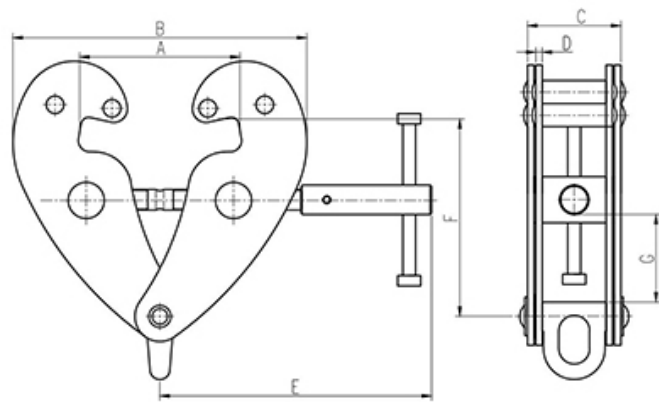
1.5

Beam Clamp

Beam Clamp YS Type



- ① Highly flexible-for lifting, pulling.
- ② Shackle suspension point.
- ③ It can be used within angle of 15 degree, no reduction in load.
- ④ Multidirectional adjusting screw spindle for easy attachment and safe and secure grip.
- ⑤ Wide beam flange adjustment range.
- ⑥ Ensure that the clamp is fitted correctly over the center of gravity of the item being lifted and will not be subjected to side loading.



Model	Capacity Load (T)	Test Load (T)	I-Beam Width Range (mm)	A Max.	B		C	D	E	F		Min.G	Net Weight (kg)
					Min.	Max.				Min.	Max.		
YS-1	1	1.5	75-220	270	185	370	80	5	220	90	165	25	3.8
YS-2	2	3	75-220	270	185	370	85	6	220	90	165	25	5
YS-3	3	4.5	80-320	350	225	500	117	8	265	140	225	45	9
YS-5	5	7.5	80-320	350	225	500	125	10	265	140	225	45	11
YS-10	10	15	90-320	365	255	510	158	12	280	170	235	50	16

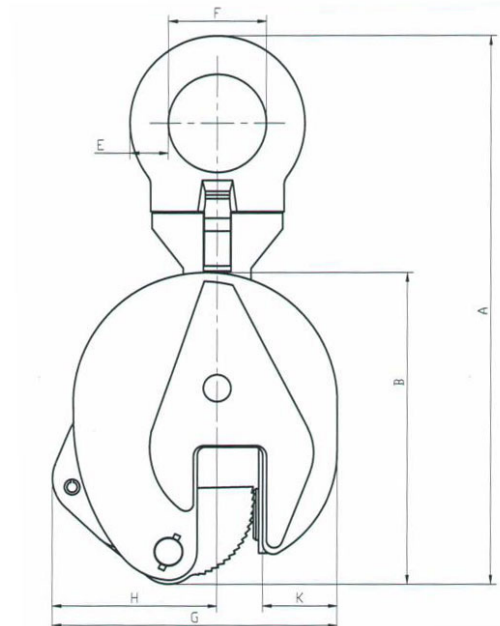
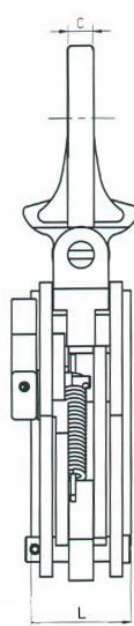
1.6

Lifting Clamp

Vertical Lifting Clamp CD Type



- ① Used for lifting and transporting steel plates and structures from all positions.
- ② Equipped with hinged rings, free rotation.
- ③ Safety locking mechanism ensured the clamp does not slip.
- ④ Aside from transporting plate, this clamp is well-suited to turning over steel structures and welded constructions.



Model	Opening Size (mm)	Capacity (kg)	Test Load (kg)	Net Weight (kg)	A	B	C	E	F	G	H	K	L
CD0.8T	0-15	800	1600	2	250	125	10	12	30	105	64	29	40
CD1T	0-20	1000	2000	4	290	170	12	16	48	145	84	42	55
CD2T	0-25	2000	4000	8	375	205	18	22.5	68	175	98	55	56
CD3.2T	0-30	3200	6400	15	425	237	20	29	75	215	120	55	78
CD5T	0-50	5000	10000	21	480	262	20	30	68	232	140	59	90
CD8T	0-45	8000	16000	37	600	330	28	38	88	290	155	77	100
CD12T	50-90	1200	2400	50	700	380	25	45	90	420	243	135	112
CD16T	60-100	1600	3200	65	710	410	30	50	100	445	245	110	120

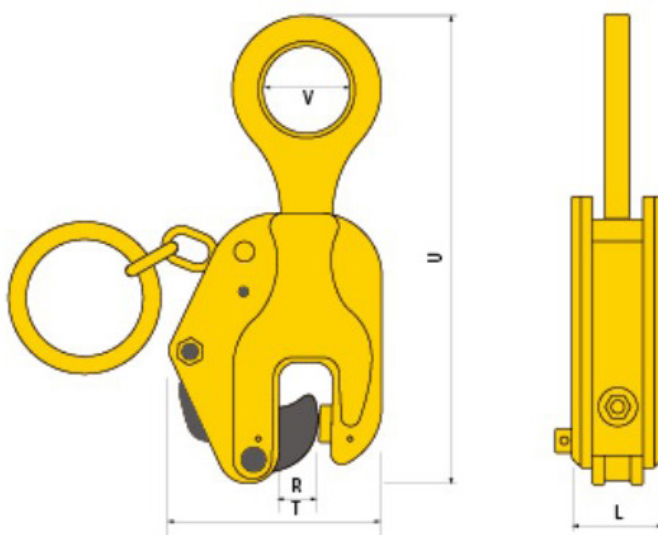
1.6

Lifting Clamp

Vertical Lifting Clamp CDH Type



- ① Standard design clamp for vertical lifting of steel plates and steel structures.
- ② The spring-loaded tightening lock mechanism assures a positive initial clamping force.
- ③ Clamps are equipped with a safety mechanism, ensuring the clamp does not slip when lifting force is applied and when load is being lowered.
- ④ High-frequency quenching of die-forged special alloy steels gives greater durability to the cam.



Model	Jaw Opening (mm)	Load Capacity (kg)	T(mm)	U(mm)	V(mm)	L(mm)	Net Weight (kg)
CDH0.8T	0~16	800	123	265	40	44	2.8
CDH1T	0~22	1000	124	295	50	54	3.6
CDH2T	0~30	2000	154	385	54	56	5.5
CDH3T	0~40	3000	180	400	60	72	10
CDH5T	0~50	5000	222	483	68	76	17
CDH8T	0~60	8000	265	535	65	90	26
CDH10T	0~90	10000	290	600	80	95	32
CDH12T	25~90	12000	408	700	80	113	48
CDH16T	60~125	16000	465	780	100	121	80
CDH20T	0~90	20000	563	933	100	140	149
CDH30T	10~90	30000	568	918	100	142	155

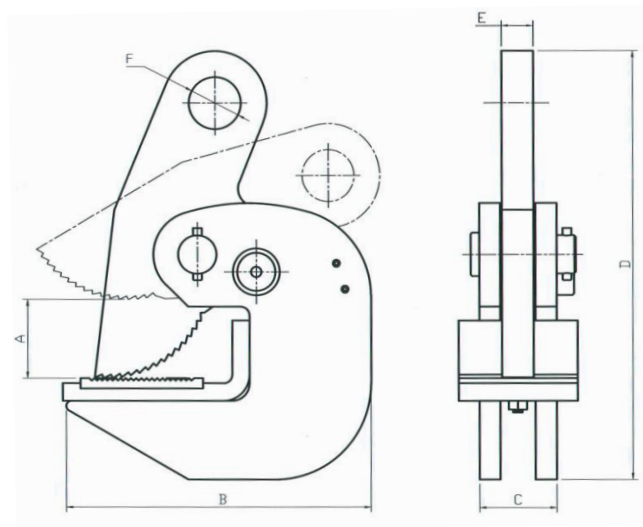
1.6

Lifting Clamp

Horizontal Lifting Clamp PDB Type



- ① Suitable for lifting and transport of steel plates.
- ② Manufactured from high quality carbon steel and with a safety lock.
- ③ Horizontal plate clamp must be used in pairs or multiples.
- ④ Estimate the plate that is to be lifted or moved and make sure it does not exceed the rated load of the clamp.
- ⑤ Do not lift the plate that is not fully engaged with the clamping jaws.



Model	Capacity	A	B	C	D	E	F	Unit weight(Per Pair)
PDB0.8T	0.8T	0-25	125	40	165	14	22	5
PDB1T	1T	0-30	148	40	205	16	25	7
PDB1.6T	1.6T	0-30	148	45	205	16	30	8
PDB2T	2T	0-40	172	47	245	18	30	10
PDB3.2T	3.2T	0-45	180	50	245	18	30	12
PDB4T	4T	0-50	170	52	260	18	30	13
PDB5T	5T	0-55	180	56	260	20	30	15
PDB6T	6T	0-65	210	62	308	22	37	21
PDB6T(B)	6T	0-130	316	62	310	22	37	44
PDB8T	8T	0-100	282	65	400	25	55	44
PDB10T	10T	0-125	325	75	500	28	55	66

1.7

Hydraulic Jack

HM Hydraulic Jack



- ① Compact and stable construction.
- ② Can be used in any position.
- ③ The cylinder can rotate 360 degrees, two support surfaces, can be used widely.
- ④ Meet ASME/ANSI B 30.1.1986 standard, approved by CE certification.
- ⑤ Lowering speed can be accurately adjusted.
- ⑥ Pump lever is removable.

Model	Capacity (kgs)	Lifting Range of Foot (mm)	Lifting Range of Head (mm)	Max Lever Force (kgs)	Weight (kgs)
HM50	5000	25-230	368-573	25	38
HM100	10000	30-260	420-650	35	40
HM250	25000	58-273	505-720	102	40

Hydraulic Bottle Jack



- ① Capacity: From 2T to 50T.
- ② CE certified.
- ③ Color: Can meet customer's requirement.

Model	Capacity (ton)	Min.H. (mm)	Lifting H. (mm)	Adjust H. (mm)	Max.H. (mm)	N.W. (kg)	QTY/20 CY (pcs)
T20402	2	148	80	50	278	2.3	7200
T20402B							6350
T20404	3/4	180	110	50	340	3.2	4920
T20404B							4425
T20406	5/6	185	110	60	355	4.1	3750
T20406B							3395
T20408	8	200	125	60	385	5.2	3090
T20408B							2956
T20410	10	200	125	60	385	5.6	2835
T20410B							2750
T20412	12	210	125	60	395	6.8	2350
T20416	15/16	225	140	60	425	7.8	2000
T20420	20	235	145	60	440	10.0	1558
T20432	30/32	255	150	/	405	13.0	1170
T20450	50	255	150	/	405	19.5	738

1.7

Hydraulic Jack

Hydraulic Floor Jack



Model	Capacity(ton)	Min.H.(mm)	Max.H.(mm)	N.W.(kg)	G.W.(kg)	20' Container(pcs)
T30202	2	135	340	9	9.5	1890
T31103	3	135	495	33.5	35.5	450

Industrial Toe Jack



- ① Head Capacity: From 5T to 50T, Toe Capacity: From 2.5T to 25T.
- ② Never load the toe jack beyond its rated capacity.
- ③ Do not add weight to a supported load.

SPEC.	CAPACITY(ton)		TOE (mm)				WEIGHT
MODEL	TOE	HEAD	MIN.H.	LIFT	MAX.H.	LXW	LXW (kg)
T20605	2.5	5	18	123	141	34X60	9.0
T20608	4	8	22	118	140	44X66	14.5
T20610	5	10	25	154	179	56X74	21.0
T20620	10	20	30	163	193	67X102	39.6
T20630	15	30	35	160	195	72X122	58.4

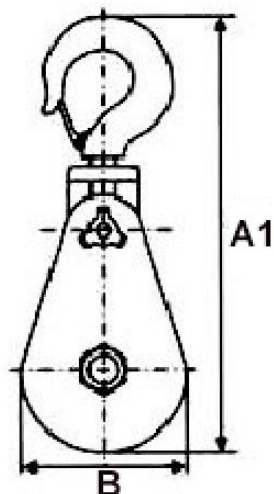
1.8

Snatch Block

Snatch Block with Hook



- ① Capacity from 2T to 85T.
- ② Drop forged, heat treated swivel hook or shackle.
- ③ Bronze bushings or roller bearings are available.
- ④ Never use chain or wire to sling the load.
- ⑤ Ensure the load is directly in line with the appliance, do not side load the equipment.



TYPE	S.W.L.	SHEAVE DIA	A1	B	C	FOR WIRE DIA.	N.W.
HOOK	(T)	(mm)	(mm)	(mm)	(mm)	(mm)	(kg)
3"	2	75	292	82	70	7-9	3.9
4 1/2"	4	115	358	120	70	10-12	6.2
6"	4	150	412	160	70	16-18	8.4
6"	8	150	498	160	93	20-22	14.1
8"	8	200	549	210	93	20-22	19
8"	15	200	672	230	102	22-24	34
10"	10	250	695	260	115	24-26	36
10"	12	250	701	260	115	24-26	36
12"	12	300	797	310	133	24-26	56
12"	15	300	800	310	133	24-26	58
14"	22	355	960	365	140	28-32	112
16"	22	400	1027	415	140	28-32	122
16"	30	400	1085	415	155	32-35	170
20"	30	500	1177	514	162	32-35	213
24"	50	600	1445	625	240	46-50	408
30"	85	760	1960	800	288	56-64	810

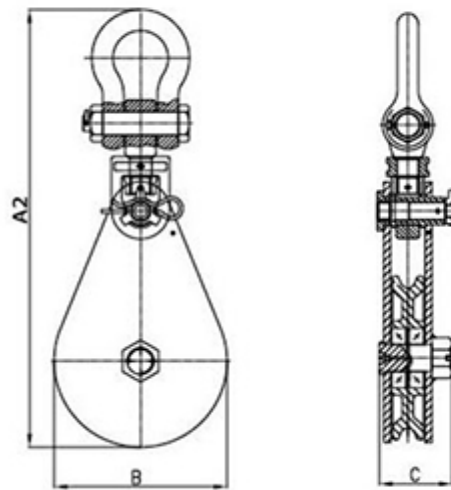
1.8

Snatch Block

Snatch Block with Shackle



- ① Capacity from 2T to 85T.
- ② Drop forged, heat treated swivel hook or shackle.
- ③ Bronze bushings or roller bearings are available.
- ④ Never use chain or wire to sling the load.
- ⑤ Ensure the load is directly in line with the appliance, do not side load the equipment.



TYPE	S.W.L.	SHEAVE DIA	A2	B	C	FOR WIRE DIA.	N.W.
HOOK	(T)	(mm)	(mm)	(mm)	(mm)	(mm)	(kg)
3"	2	75	286	82	70	7-9	3.8
4.1/2"	4	115	345	120	70	10-12	6.2
6"	4	150	399	160	70	16-18	8.3
6"	8	150	475	160	93	20-22	14.1
8"	8	200	528	210	93	20-22	18.7
8"	15	200	663	210	102	22-24	33
10"	10	250	679	260	115	24-26	34.7
10"	12	250	679	260	115	24-26	34.7
12"	12	300	767	310	133	24-26	54
12"	15	300	788	310	133	24-26	55
14"	22	355	952	365	140	28-32	109
16"	22	400	1019	415	140	28-32	118
16"	30	400	1126	415	155	32-35	164
20"	30	500	1256	514	162	32-35	208
24"	50	600	1525	625	240	46-50	418
30"	85	760	1910	800	288	56-64	840

1.8

Snatch Block

HS Type Manila Rope Block



Sheave dia (in)	For wire dia (mm)	Single Sheave		Double Sheave		Triple Sheave	
		WLL(lbs)	N.W(kg)	WLL(lbs)	N.W(kg)	WLL(lbs)	N.W(kg)
3	3/8	500	0.34	800	0.62	1200	0.74
4	1/2	900	0.63	1400	1.46	1800	1.47
5	5/8	1200	1.02	1800	1.76	2400	2.27
6	3/4	1800	1.7	2500	2.72	3200	4.31
8	7/8-1	28000	3.23	3800	4.88	4800	6.69

Steel Pulley



Sheave dia(mm)	For rope dia.(mm)	WLL(ton)	N.W(kg)
100	12	1	1.8
140	14	2.5	5
160	16	5	9.2

Oval Eye Snatch Block



Sheave dia(in)	For rope dia.(mm)	WLL(ton)	N.W(kg)
5	18-20	3	6.7
6	20-22	5	10.8

Gin Block



Sheave dia (in)	For wire dia (mm)	WLL (lbs)	N.W	
			New Type(kg)	Old Type(kg)
8	7/8	1000	4	4.08
10	1	1000	4.44	4.86
12	1	1000	5.76	7.27
14	1	1000	9	9.3

1.8

Snatch Block

Regular Wood Block, with Hook or Shackle



Sheave dia	FOR WIRE DIA.	Single Sheave			Double Sheave			Triple Sheave		
		WLL	Hook type N.W	Shackle type N.W	WLL	Hook type N.W	Shackle type N.W	WLL	Hook type N.W	Shackle type N.W
(in)	(mm)	(lbs)	(kg)	(kg)	(lbs)	(kg)	(kg)	(lbs)	(kg)	(kg)
3	3/8	500	0.75	0.5	800	0.95	1.1	1200	1.2	1.3
4	1/2	1000	1	0.85	1400	1.7	1.54	1800	2.02	2.3
5	3/4	1200	1.6	1.9	1800	2.85	2.76	2400	3.6	3.4
6	3/4	1800	2.75	2.74	2500	5.3	4.6	3200	6.7	6
8	1	2800	4.9	6.1	3800	9.1	9.55	4800	11	10
10	1.1/8	4000	8.4	8.35	6000	15.5	14.2	8000	16.7	15.5
12	1.1/4	5000	14.7	14.6	8000	24.5	24.5	10000	25	25

Red Snatch Block, with Shackle or Swivel Eye



Safety factor: 4 times

Sheave dia	S.W.L	FOR WIRE DIA	SHACKLE TYPE N.W	EYE TYPE N.W
(in)	(ton)	(mm)	(kg)	(kg)
3	1.5	4-6	1.5	1.65
4	3	6-9	2.3	2.9
5	4.5	8-12	4.15	5.4
6	6	10-14	6.6	7.95
8	8	14-18	13.5	18.05

Pulley Block

- 1 Light and economic types are available.
- 2 H=Hook, E=Eye, S=Single sheave, D=Double sheave.
- 3 K1=One side opened, K2=Double side opened, B=Closed type.
- 4 Safety factor: 4 times.

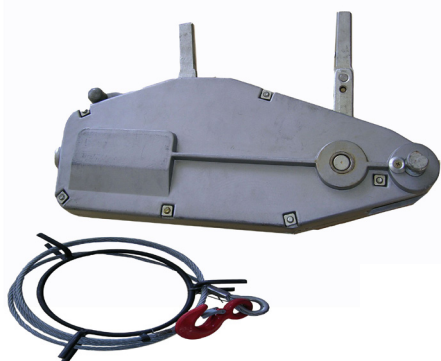


Sheave dia	FOR WIRE DIA	WLL	HSK1 TYPE N.W	ESK1 TYPE N.W	HKD1 TYPE N.W	HKD2 TYPE N.W	HSB TYPE N.W	EDB TYPE N.W
(in)	(mm)	(ton)	(kg)	(kg)	(kg)	(kg)	(kg)	(kg)
3	8	0.5	1.55	1.32	2.1	2.2	1.3	1.65
4	10	1	2.6	2.5	3.8	4	2.5	3.4
5	13	1.5	4	3.8	5.7	5.9	3.9	5.3
6	16	2	6.6	6.3	9.8	10	7.1	10.5
7	19	3	9.7	9.8	15.8	16.25	9.8	14.3
8	22	4	12.5	12.2	18.5	20	11	18.1
10	25	5	20.1	18.5	29.5	28.4	18	28.8
12	28	6	27.5	27	36	37.5	-	-

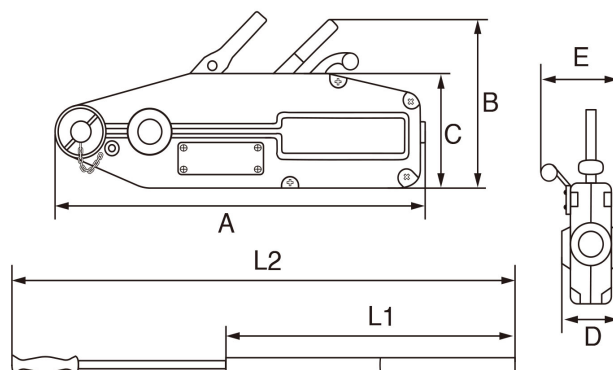
1.9

Wire Rope Pulling Machine

Wire Rope Pulling Machine



- ① Versatile and portable unit for pulling, lifting and extending.
- ② Overload protection provides high safety.
- ③ The attached wire rope is high tensile and wear resistant.
- ④ Standard pulling machine includes the operating lever and 20M length of wire rope.
- ⑤ Aluminium body and steel body are both available.
- ⑥ Securing loads over long distances.



Item No.		0.8T	1.6T	3.2T	5.4T
Rated Capacity	kg	800	1600	3200	5400
Rated Forward Handpower	N	343	441	441	745
Rated Forward Travel	mm	≥52	≥55	≥28	≥30
Rope Diameter	mm	8.3	11	16	20
Wire Rope Safety Factor		5	5	5	5
Maximum Travelling Load	kg	1200	2400	5000	8000
Dimension(mm)	A	426	545	660	932
	B	235	280	325	420
	C	168	190	230	300
	D	60	72	91	155
	E	64	97	116	152
	L1	-	800	800	880
	L2	800	1200	1200	1350

Hand Winch with Cable, Zinc Plated



- ① Compact design.
- ② Spur gear drive for optimal efficiency.
- ③ The surface treatment is zinc plated or black electrophoresis.
- ④ Suitable for lifting and lowering applications.

ITEM	Cable	Gear Ratio	Working Capacity(kgs)	Qty/CTN (pcs)	G/W (kgs)	N/W (kgs)	Meas (cm)
600SZ	Φ4.2mm*7m	3.1:1	272	6	15	14	41*38*15
800SZ	Φ4.2mm*8m	3.1:1	363	6	15.5	14.5	41*38*15
1000SZ	Φ4.5mm*8m	4.1:1	454	6	19	18	44*40*16
1200SZ	Φ4.5mm*10m	4.1:1	545	6	20	19	44*40*16
1200SZ20	Φ4.5mm*20m	4.1:1	545	6	25	24	44*40*16
1400SZ	Φ4.5mm*10m	4.1:1	635	6	20.5	19.5	44*40*16
1600SZ	Φ5mm*10m	4.1:1	726	6	21	20	44*40*16
1800SZ	Φ5mm*8m	4.1:1	820	4	22	21	38*34*26
2000SZ	Φ5mm*10m	4.1:1	908	4	23	22	38*34*26
2500SZ	Φ5mm*8m	4:1	1135	4	24	23	40*32*26
3000SZ	Φ5mm*10m	4:1	1362	4	25	24	40*32*26

Hand Winch with Strap, Zinc Plated



- ① Compact design.
- ② Spur gear drive for optimal efficiency.
- ③ The surface treatment is zinc plated or black electrophoresis.
- ④ Suitable for lifting and lowering applications.

ITEM	Strap	Gear Ratio	Working Capacity(kgs)	Qty/CTN (pcs)	G/W (kgs)	N/W (kgs)	Meas (cm)
600ZZ	50mm*7m	3.1:1	272	6	13.5	12.5	41*38*15
1000ZZ	50mm*10m	4.1:1	454	6	17.5	16.5	44*40*16
1500SB	50mm*10m	4.1:1	635	6	19	18	44*40*16
1800SB	50mm*10m	4.1:1	820	4	20.5	19.5	38*34*26
2500SB	50mm*10m	4:1	1135	4	22	21	40*32*26

1.10

Winch

Hand Winch with Cable, Black Electrophoresis



- ① Compact design.
- ② Spur gear drive for optimal efficiency.
- ③ The surface treatment is zinc plated or black electrophoresis.
- ④ Suitable for lifting and lowering applications.

ITEM	Cable	Gear Ratio	Working Capacity(kgs)	Qty/CTN (pcs)	G/W (kgs)	N/W (kgs)	Meas (cm)
600SB	Φ4.2mm*7m	3.1:1	272	6	15	14	41*38*15
800SB	Φ4.2mm*8m	3.1:1	363	6	15.5	14.5	41*38*15
1000SB	Φ4.5mm*8m	4.1:1	454	6	19	18	44*40*16
1200SB	Φ4.5mm*10m	4.1:1	545	6	20	19	44*40*16
1400SB	Φ4.5mm*10m	4.1:1	635	6	20.5	19.5	44*40*16
1600SB	Φ5mm*10m	4.1:1	726	6	21	20	44*40*16
1800SB	Φ5mm*8m	4.1:1	820	4	22	21	38*34*26
2000SB	Φ5mm*10m	4.1:1	908	4	23	22	38*34*26

Hand Winch with Strap, Black Electrophoresis



- ① Compact design.
- ② Spur gear drive for optimal efficiency.
- ③ The surface treatment is zinc plated or black electrophoresis.
- ④ Suitable for lifting and lowering applications.

ITEM	Strap	Gear Ratio	Working Capacity(kgs)	Qty/CTN (pcs)	G/W (kgs)	N/W (kgs)	Meas (cm)
600ZB	50mm*7m	3.1:1	272	6	13.5	12.5	41*38*15
1000ZB	50mm*10m	4.1:1	454	6	17.5	16.5	44*40*16
1500ZB	50mm*10m	4.1:1	635	6	19	18	44*40*16
1800ZB	50mm*10m	4.1:1	820	4	20.5	19.5	38*34*26
2500ZB	50mm*10m	4.1	1135	4	22	21	40*32*26

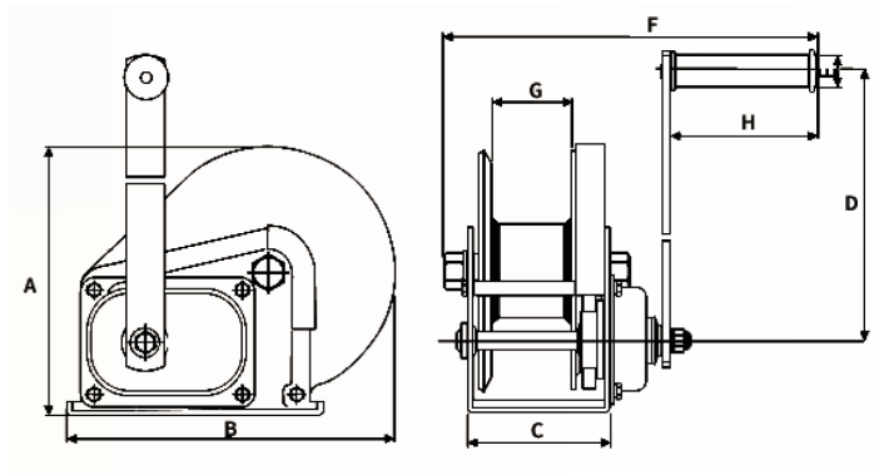
1.10

Winch

Hand Winch, Powder Coating



- ① Winching housing and rope drum from robust steel plate for high versatility.
- ② Automatic load pressure brake for safe holding and extremely sensitive lowering of the load.
- ③ Unintentional brake release is prevented even with swinging loads.



Model		1200A	1800A	2600A
Capacity 1st Layer(lbs)		1200	1800	2600
Test Load(KN)		6.8	10.3	15
Speed Ratio		4.2:1	5:1	10:1
Wire Rope(ΦmmxLm)		4mmx15m	5mmx15m	6mmx15m
Dimension(mm)	A	156	203	216
	B	184	256	293
	C	88	107	127
	D	204	319	319
	E	27	27	27
	F	280	283	305
	G	51	60	63
	H	109	109	109
Net weight(kg)		3.8	7.8	10.3

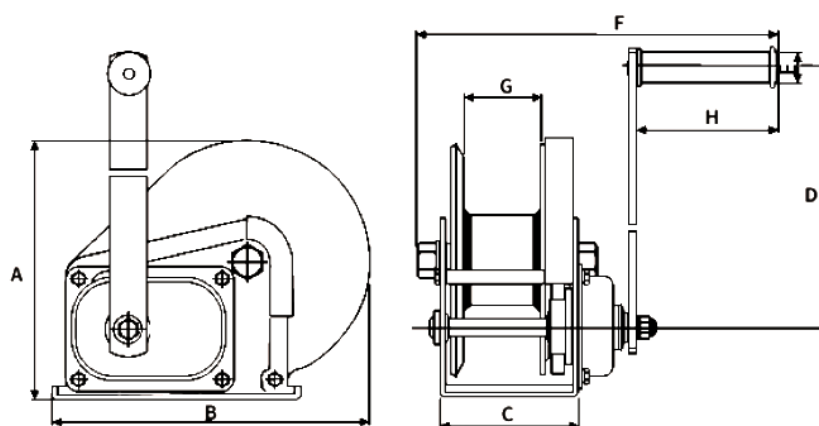
1.10

Winch

Stainless Steel Hand Winch



- ① The whole machine is made of 304 stainless steel material, excellent corrosion and rust prevention performance.
- ② Equipped with friction brake device, brake flexible, lifting and self-locking, high safety factor.



Model		800S	1200S	1600S	1800S	2600S
Capacity 1st Layer(lbs)		800	1200	1600	1800	2600
Test Load(KN)		3.56	5.35	7.12	8	11.5
Speed Ratio		3:1	4.2:1	5:1	5:1	10:1
Wire Rope(ΦmmxLm)		4mmx10m	4mmx15m	5mmx15m	5mmx15m	6mmx15m
Dimension(mm)	A	122	156	173	203	216
	B	117	184	209	256	293
	C	88	88	99	107	127
	D	170	204	204	319	319
	E	27	27	27	27	27
	F	277	280	287	283	305
	G	50	51	60	60	63
	H	109	109	109	109	109
Net weight(kg)		2.6	3.6	4.3	7.8	10.3



HANDLING EQUIPMENT

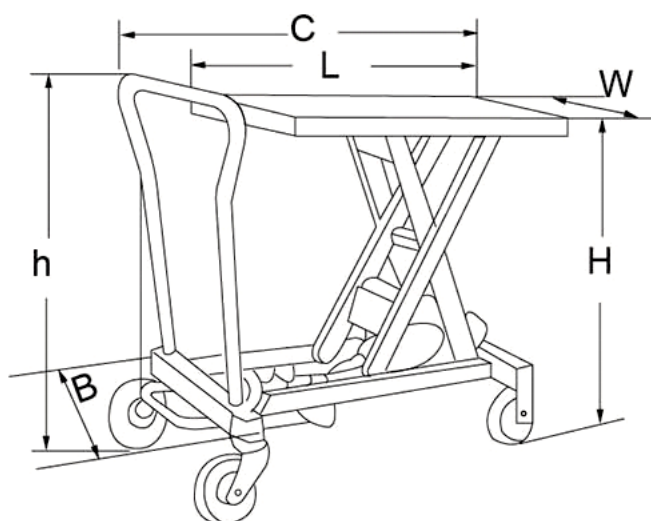
2.1

Stationary Lift Table

Lift Table MH-B/MH-C



- ① Economic and reliable.
- ② New design to meet norm EN1570.
- ③ New hydraulic system increases safety and protects your goods, stepless rate of lowering system remains irrespective of the weight of the load.



Model		MH-B20	MH-B30	MH-B50	MH-B80	MH-C35
Capacity	(kg)	200	300	500	800	350
Table Length	L(mm)	700	852	852	920	920
Table Width	W(mm)	450	502	502	520	520
Table Min.Height	Hmin(mm)	265	330	390	442	435
Table Max.Height	Hmax(mm)	755	910	910	1000	1500
Handle Height	h(mm)	980	1100	1100	1130	1130
Wheel Dia.	(mm)	Φ100	Φ125	Φ125	Φ150	Φ150
Overall Size	BxC(mm)	450x870	502x1050	502x1050	520x1170	520x1170
Foot Pedal to Max.Height		≤25	≤30	≤40	≤70	≤70
Net Weight	(kg)	44	74	81	114	125

2.1

Stationary Lift Table

Double Scissor Lift Table MJ-B



- ① Heavy duty design.
- ② Meet EN1570 norm and ANSI/ASME safety standard.
- ③ Upper platform lifted with aluminum safety bar preventing descent on contact with obstructions.
- ④ Internal power pack equipped with relief valve against overloading and compensated flow valve for controlled lowering speed.
- ⑤ Heavy duty cylinders with drainage system and check valve to stop the lift table lowering in case of hose burst.
- ⑥ Safety clearance between scissors to prevent trapping during operation.
- ⑦ Self-lubricating bushings on pivot points.
- ⑧ Removable lifting eye to facilitate handling and lift table installation.

Model		MJ-B1000	MJ-B2000	MJ-B4000
Capacity	(kg)	1000	2000	4000
Lowered Height	(mm)	305	360	400
Raised Height	(mm)	1780	1780	2050
Platform Size	LxW(mm)	820x1300	850x1300	1700x1200
Base Frame Size	(mm)	640x1240	785x1220	1600x900
Lift Time	(sec)	35~45	35~45	55~65
Power Pack		380V/50Hz, AC2.2kw	380V/50Hz, AC2.2kw	380V/50Hz, AC2.2kw
Net Weight	(kg)	210	295	520

Lift Table MJ-A



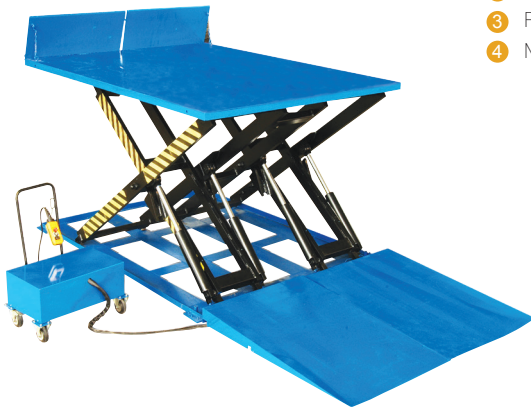
- ① Heavy duty design, removable lifting eyes.
- ② Meet EN1570 norm and ANSI/ASME safety standard.
- ③ High quality power unit made in Europe.
- ④ Self-lubricating bushings on pivot points.
- ⑤ Upper platform lifted with aluminum safety bar preventing descent on contact with obstructions.
- ⑥ Internal power pack equipped with relief valve against overloading and compensated flow valve for controlled lowering speed.
- ⑦ Heavy duty cylinders with drainage system and check valve to stop the lift table lowering suddenly in case of hose burst.
- ⑧ Safety clearance between scissors to prevent trapping during operation.

Model	Capacity(kg)	Min.Height(mm)	Max.Height(mm)	Platform Size(mm)	Basement Size(mm)	Lifting Time(s)	Net Weight(kg)	Standard Power Pack
MJ-A6001	6000	390	1150	1600x1000	1560x1000	25-35	540	3 phases 380V 50Hz AC 2.2kW
MJ-A6002	6000	390	1150	1800x1000	1560x1000	25-35	555	
MJ-A6003	6000	390	1150	1600x1400	1560x1000	25-35	586	
MJ-A6004	6000	390	1150	1800x1400	1560x1000	25-35	605	
MJ-A6005	6000	390	1150	1600x1500	1560x1500	25-35	670	
MJ-A6006	6000	390	1150	1800x1500	1560x1500	25-35	690	
MJ-A6007	6000	390	1150	1600x2000	1560x1500	25-35	728	
MJ-A6008	6000	390	1150	1800x2000	1560x1500	25-35	752	
MJ-A6009	6000	400	1600	2000x1000	1955x1000	30-40	675	
MJ-A60010	6000	400	1600	2200x1000	1955x1000	30-40	690	
MJ-A60011	6000	400	1600	2000x1400	1955x1000	30-40	728	
MJ-A60012	6000	400	1600	2200x1400	1955x1000	30-40	748	
MJ-A60013	6000	400	1600	2000x1500	1955x1500	30-40	835	
MJ-A60014	6000	400	1600	2200x1500	1955x1500	30-40	858	
MJ-A60015	6000	400	1600	2000x2000	1955x1500	30-40	908	
MJ-A60016	6000	400	1600	2200x2000	1955x1500	30-40	934	

2.1

Stationary Lift Table

Loading Table MJ-E



- 1 Heavy duty design.
- 2 For loading and unloading goods between ground and containers or trucks.
- 3 Removable lifting eye to facilitate handling and loading table installation.
- 4 Meet EN1570 norm and ANSI/ASME safety standard.

Model		MJ-E2500
Capacity	(kg)	2500
Lowered Height	(mm)	130
Raised Height	(mm)	1700
Platform Size	LxW(mm)	2000x2600
Base Frame Size	(mm)	1900x2510
Lift Time	(sec)	60~70
Power Pack		380V/50HZ, AC 2.2kw
Net Weight	(kg)	1700

2.2

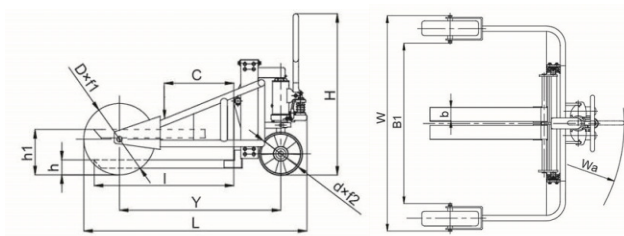
Pallet Truck

Rough Terrain Truck MK-D



This special rough terrain truck is for applications such as builders yards, garden centers or out on site where there is only an occasional need for moving pallets by forklifts or where no ordinary forklift or even pallet truck can go (for example rooftops where forklifts aren't allowed). Large wheels and straddle forks arrangement can be used for any type of pallet on uneven ground.

- 1 Great equipment to move heavy loads up till 1250kg.
- 2 Ergonomic design of the frame to reduce the operation effort.
- 3 Meanwhile, the truck is robust enough for the purpose to work outside such as builder yard, garden centers where there's only an occasional need for moving pallets by forklifts or where no ordinary forklift or even pallet truck can go. The fork is adjustable for special dimension pallet.



Model		MK-D100	MK-D125
Rated Capacity	(kg)	1000	1250
Max.Fork Height	h1(mm)	240	
Min.Fork Height	h(mm)	70	
Fork Length	l(mm)	800(860)	
Load Center	C(mm)	400(430)	
Adjustable Fork Width	(mm)	216-680	256-680
Individual Fork Width	b(mm)	100	120
Distance inside the Front Wheel	B1(mm)	1230	
Axle Distance between front Wheel and rear steering wheel	Y(mm)	973	
Front Load Wheel	Dia.xW(mm)	Φ568x145	
Rear Steering Wheel	Dia.xW(mm)	Φ250	
Tur Radius	Wa(mm)	1500	
Overall Size	LxWxH(mm)	1406x1670x1280	
Net Weight	(kg)	210	238

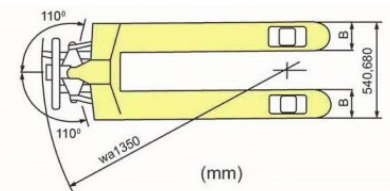
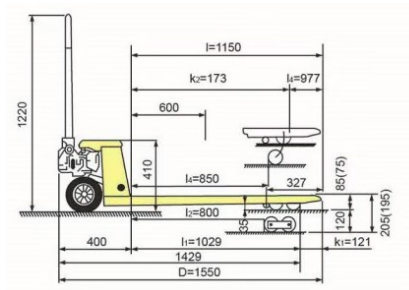
2.2

Pallet Truck

Hand Pallet Truck MB-A



- 1 A built in overload valve and totally sealed hydraulic pump.
- 2 German seal kit offers long span life of pump for 2 years warranty.
- 3 Heavy duty and reinforced forks for greatest strength and durability.
- 4 Entry rollers prevent physical exertion of the operator and protect load rollers and pallet.
- 5 Maintenance free oilless bushings at key points offer you less operating force and longer span life of pallet truck.
- 6 Option: quick lift available.
- 7 Conforms to EN1757-2.



Model		MB-A20		MB-A25		MB-A30	
Capacity	(kg)	2000		2500		3000	
Max.Fork Height	(mm)	205 (or 195)					
Min.Fork Height	(mm)	85(or 75)					
Fork Length	(mm)	1150	1220	1150	1220	1150	1220
Width Overall Forks	(mm)	540	680	540	680	540	680
Individual Fork Width B	(mm)	160					
Load Roller Dia.xWidth	(mm)	Φ80x70 (or Φ70x70) Nylon,Polyurethane					
Steering Wheel Dia.xWidth	(mm)	Φ200x50(orΦ180x50)Nylon,Polyurethane,Rubber					
Net Weight	(kg)	78	82	80	84	85	89

Mobile Weighing Truck WA-Q



- 1 A quick and economical solution to determine pallet weight.
- 2 Graduation: 1kg.
- 3 4 load cells.
- 4 1 Junction Box (Plastic, water-proof).
- 5 Printer available for option.

Model	WA-Q20E/25E	
Material	Mild-Steel	
Capacity (kg)	2000/2500	
Min.Fork Height (mm)	85(or 75)	
Max.Fork Height (mm)	195(or 185)	
Fork Length (mm)	1150	1220
Width Overall Forks (mm)	540	680
Accuracy	0.5‰	
Load Roller (tandem)	Φ70x70	
Steering Wheel (mm)	Φ180x50 Nylon, Polyurethane,Rubber	

*Mobile Weighing Truck with Printer is available on request.

2.2

Pallet Truck

Manual Scissor Truck



- ① The combination of mixer truck peace car.
- ② Electric series uses the free maintenance starting batteries, save maintenance time and cost, convenient and quick charging, battery lasting, charge on display table. Low voltage alarm lamp.
- ③ When rising height is greater than 400 mm, fork leg is stable on the ground to prevent slipping and to achieve the effect of the brake.
- ④ Mixer quickly rising oil cylinder and according to the man-machine engineering design of the plastic handle, thermal comfort, save time and effort.
- ⑤ Mixer EN1757-4 European standard.

Model	Unit	Specification	
Rated load	kg	1000	1000
Lowest height	mm	85	
Fork height	mm	800	
Fork width	mm	540	680
Fork length	mm	1150	1150
Net weight	kg	110	115

Electric Scissor Truck



- ① The combination of mixer is pallet truck peace.
- ② Electric series uses the free maintenance starting batteries, save maintenance time and cost, convenient and quick charging, battery lasting, charge on display table. Low voltage alarm lamp. Built-in charger.
- ③ When rising height is greater than 400 mm, fork leg is stable on the ground to prevent slipping and to achieve the effect of the brake.
- ④ Mixer quickly rising oil cylinder and according to the man-machine engineering design of the plastic handle, thermal comfort, save time and effort.
- ⑤ Mixer European EN1757-4 standard.

Model	Unit	Specification	
Rated load	kg	1000	1000
Minimum height of the goods fork	mm	85	
Maximum height of operation	mm	800	
Fork width	mm	520	680
Fork length	mm	1140	
The battery voltage	A/h	12/63	
The output voltage	V	220~240/12	
The net weight	kg	142	148

2.3

Drum Handling

Hydraulic Drum Truck CA-G



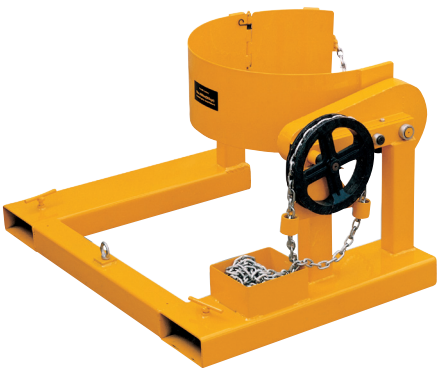
- 1 One person operate easily.
- 2 Only for carrying and moving, not for tilting.
- 3 Lifting after grabbing faster when operating.

Model		CA-G36
Capacity	(kg)	365
Acceptable Drum Style		55 gallon, Steel
Max.Height of Arm	(mm)	390
Min.Height of Arm	(mm)	270
Radius of Arm	(mm)	290
Oversize(LxW)	(mm)	1022x722
Net weight	(kg)	53

Forklift-Karrier CC-A



- 1 Converts your fork truck into a drum handler.
- 2 CC-A series Forklift-carrier can easily lift, transport, raise and tilt loaded drums.
- 3 The 10 pull-chain loop allows control from the driver's seat.
- 4 It has 30: 1 ratio.



Model		CC-A08	CC-A15
Capacity	(kg)	364, Steel Drum	680, Steel Drum
Drum Size		210 Liters(55 gallon), 572mm Diameter	210 Liters(55 gallon), 572mm Diameter
Fork Opening		620mm apart	620mm apart
Fork Pocket	HxW(mm)	65x180	65x180
Net Weight	(kg)	70	97

2.3

Drum Handling

Gator Grip Forklift Drum Grab CC-D

- ① Carry drums by the automatic grip lock, maintains a positive grip over rough floor surface.
- ② The gator grip auto lock feature will not open and ensures safe secure drum transport.
- ③ Grip head has different position to fit different height.
- ④ Easily carry and have much more safety.
- ⑤ Suspension system for antivibration.



Model		CC-D361	CC-D362
Capacity	(kg)	360	360x2
Drum Size	(gallon)	55	55x2
Fork Opening	(mm)	560	605
Overall Size	(mm)	830x710x1000	1030x850x1000
Net Weight	(kg)	60	96

2.4

Mover and Skate

Hydraulic Furniture Mover AB-A180/AB-A181



- ① For professional transport of heavyweight items.
- ② Ideal for delivery, removal, maintenance and assembly applications.
- ③ For switch cupboards, safes, containers and machinery.
- ④ Sold in one set only.



Model		AB-A180	AB-A181
Load Capacity	(kg)	1800	1800
Lifting Height	(mm)	100	250
Lifting Plate	WxD(mm)	600x60	600x60
Wheel, Polyurethane	(mm)	Φ150	Φ150
Overall Size	LxWxH(mm)	680x420x1000	680x420x1070
Net Weight	(kg)	80	86

Manual Furniture Mover AB-A60



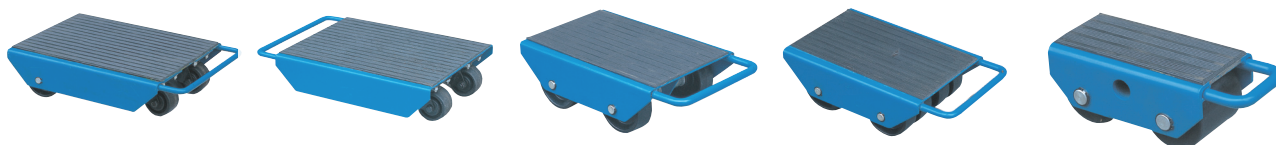
- ① Safety operated by one person.
- ② Robust lifting mechanism.
- ③ Sold in one set only.

Model		AB-A60
Load Capacity	(kg)	600
Lifting Height	(mm)	300
Lifting Plate	WxD(mm)	225x120
Wheel, Polyurethane	(mm)	Φ125
Overall Size	LxWxH(mm)	570x390x780
Net Weight	(kg)	25

2.4

Mover and Skate

Skate Fixed Type AQ-B



Model	AQ-B10	AQ-B20	AQ-B25	AQ-B30	AQ-B60
Capacity (tonne)	1	2	2.5	3	6
No. of roller (pcs)	4	8	2	4	6
No. of axle (pcs)	2	2	2	2	3
Roller size $\Phi \times W(\text{mm})$	100x35	100x35	85x90	85x85	85x85
Skate dimensions LxWxH(mm)	330x220x120	330x220x120	210x100x105	330x300x120	260x230x105
Skate weight (kg)	7	8	4	9.5	12

Steerable Skate AQ-F

They incorporate a 1-meter drawbar and a platform that swivels on a thrust bearing allowing movement around bends.

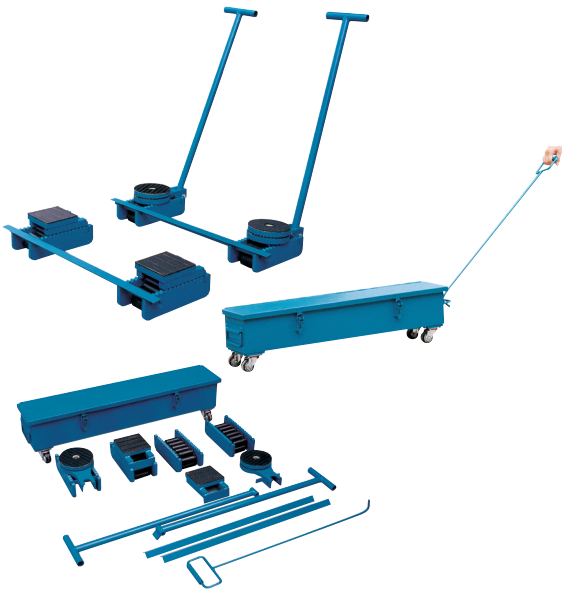


Model	AQ-F30	AQ-F60	AQ-F120
Capacity (tonne)	3	6	12
Type of Roller	nylon	nylon	steel
No. of Roller (pcs)	4	8	8
Roller Size $\Phi \times W(\text{mm})$	85x90	85x90	83x85
Dimensions LxWxH(mm)	310x255x105	630x400x115	630x400x115
Net Weight (kg)	15	50	66

2.4

Mover and Skate

Complete Skate Kits AQ-G



- 1 For short, variable transportation distances.
- 2 For installation works and movement of heavy loads.
- 3 The steering handle give you precise control making it easy to maneuver large machinery or into tight areas.
- 4 Moving speed no exceeding 5m/min.
- 5 Minimum turning circle is 3m.
- 6 Including 4 roller skates, 2 turntables, 2 packing plates, 2 steering handles, 2 link-up bars, one draw bar, one metal box.

Model	AQ-G20	AQ-G30	AQ-G60
Capacity (tonne)	20	30	60
Length Support (mm)	120	120	130
Width Support (mm)	120	120	130
Total Height (mm)	108	117	140
Rollers Dia. (mm)	Φ18	Φ24	Φ30
Swivel Top (mm)	Φ130	Φ130	Φ150
Net Weight of Kit(kg)	50	58	92

2.5

Pickup Machine

Semi Electric Pickup Machine (Upper Door Frame)



- 1 The quality is light, can easily carry out single.
- 2 The flexible and convenient operation is the best choice for the supermarket warehouse and cargo and reclaimer.
- 3 The emergency stop button.
- 4 The charging indicator.
- 5 The double brake disc brake.
- 6 The voltage display.
- 7 The safety maintenance support.
- 8 The emergency button down.
- 9 The overload limit.

Model	Unit	Code 101	Code 102
Safe working load	kg	200	
Maximum working height	mm	4700	5300
Maximum platform height	mm	2700	3300
The whole length	mm	1300	
Machine width	mm	760	840
Whole machine height	mm	1790	2000
Working platform size	mm	900*640	
Minimum ground clearance	mm	40	
Wheelbase	mm	770	
Lift motor	V/kw	12/1.6	
Rise/fall speed	sec	16/14	22/16
Battery	V/Ah	12/120	
Charger	V/A	12V/15	
Tyres(drive motor)	mm	Φ150x56	
Tyres(front wheel)	in	6	
Machine weight	kg	284	308

2.5

Pickup Machine

All Electric Pickup Machine (Double Upper Door Frame)



Product Features

- ① The flexible and convenient operation is the best choice for the supermarket warehouse and cargo and reclaimer.
- ② The 25% grade ability, can smoothly climb the slope.
- ③ The minimum turning radius of the industry (0 degrees) and the compact design is convenient to work in a small space.
- ④ The fault code automatic display for easy maintenance.

Standard configuration

- ① The proportional control.
- ② The platform door lock.
- ③ The whole trip walk.
- ④ The trackless tire.
- ⑤ The 4x 2 drive.

Optional configuration

- ① The platform work lights.
- ② The sensor is overweight.
- ③ It is connected to the guide pipe platform.

Auto Brake System

- ① The emergency system.
- ② The emergency stop button.
- ③ The oil pipe explosion protection system.
- ④ The fault diagnosis system.
- ⑤ The tilt protection system.
- ⑥ The buzzer.
- ⑦ The horn.
- ⑧ The work schedule.
- ⑨ The transport standard forklift hole.
- ⑩ The charging protection system.

Model	Unit	Code 109	Code 110
Safe working load	kg	300	
Maximum working height	mm	5000	5500
Maximum platform height	mm	3000	3500
The whole length	mm	1560	
Machine width	mm	760	
Whole machine height	mm	1940	2390
Working platform size	mm	990*700	
Minimum ground clearance	mm	40	
Wheelbase	mm	1230	
Minimum turning radius		0	
Drive motor	V/kw	2x24/0.4	
Lift motor	V/kw	24VDC/2kw	
Driving speed(put away state)	km/h	4	
Driving speed(extended state)	km/h	1.1	
Rise/fall speed	sec	20/22	24/26
Battery	V/Ah	2x12/120	
Charger	V/A	24V/12A	
Maximum climbing ability	%	25%	
Tyres(drive motor)	mm	Φ230x80	
Tyres(front wheel)	in	6	
Machine weight	kg	612	628

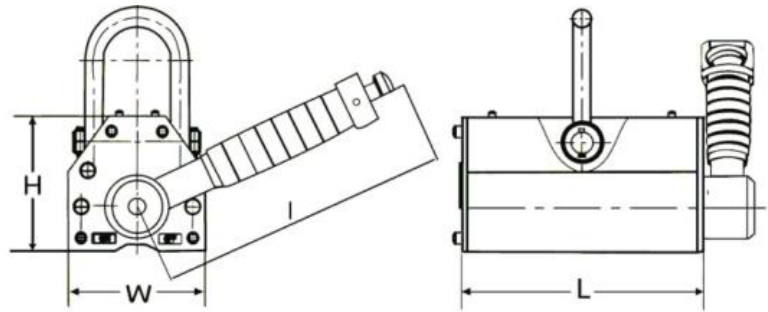
2.6

Permanent Lifting Magnet

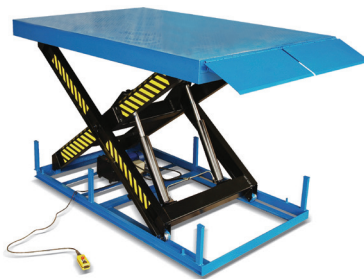
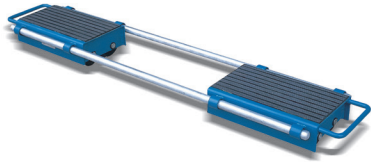
Permanent Lifting Magnet



- ① Easy, safe for operation and handling, which are widely used as hoisting devices in factories, docks, warehouses and transportation in dustries.
- ② Avoid of being bumped, which affected its lift-span and never bump handle or damage holding surface. After using, it's better to protect the lifter' holding surface by anti-rust oil.



Model	Rated Capacity(plate)	Cylindrical Capacity	Max pull-off strength	L	W	H	I	Working Temperature	Net Weight
	(kgs)	(kgs)	(kgs)					(°C)	
PML-1	100	30	350	92	64	70	142	<80	3
PML-2	200	60	700	158	64	70	142	<80	5
PML-3	300	100	1050	165	88	96	176	<80	10
PML-5	500	150	1750	216	118	120	219	<80	20
PML-6	600	200	2100	236	118	120	219	<80	24
PML-10	1000	300	3500	264	168	168	266	<80	50
PML-15	1500	500	5250	353	172	168	380	<80	70
PML-20	2000	600	7000	378	230	217	462	<80	125
PML-30	3000	-	10500	453	290	265	567	<80	220
PML-50	5000	-	17500	647	290	265	707	<80	355
PML-60	6000	-	19200	713	290	265	707	<80	398



DNL®

WWW.DNL.GROUP

Top Products for Your Choice

WWW.DNL.GROUP



QINGDAO D&L GROUP LTD.

Add: 24B, Huaren International Mansion, 2 Shandong Road, Qingdao, China 266071

Tel: +86-532-86676666

Email: info@dnl.com